

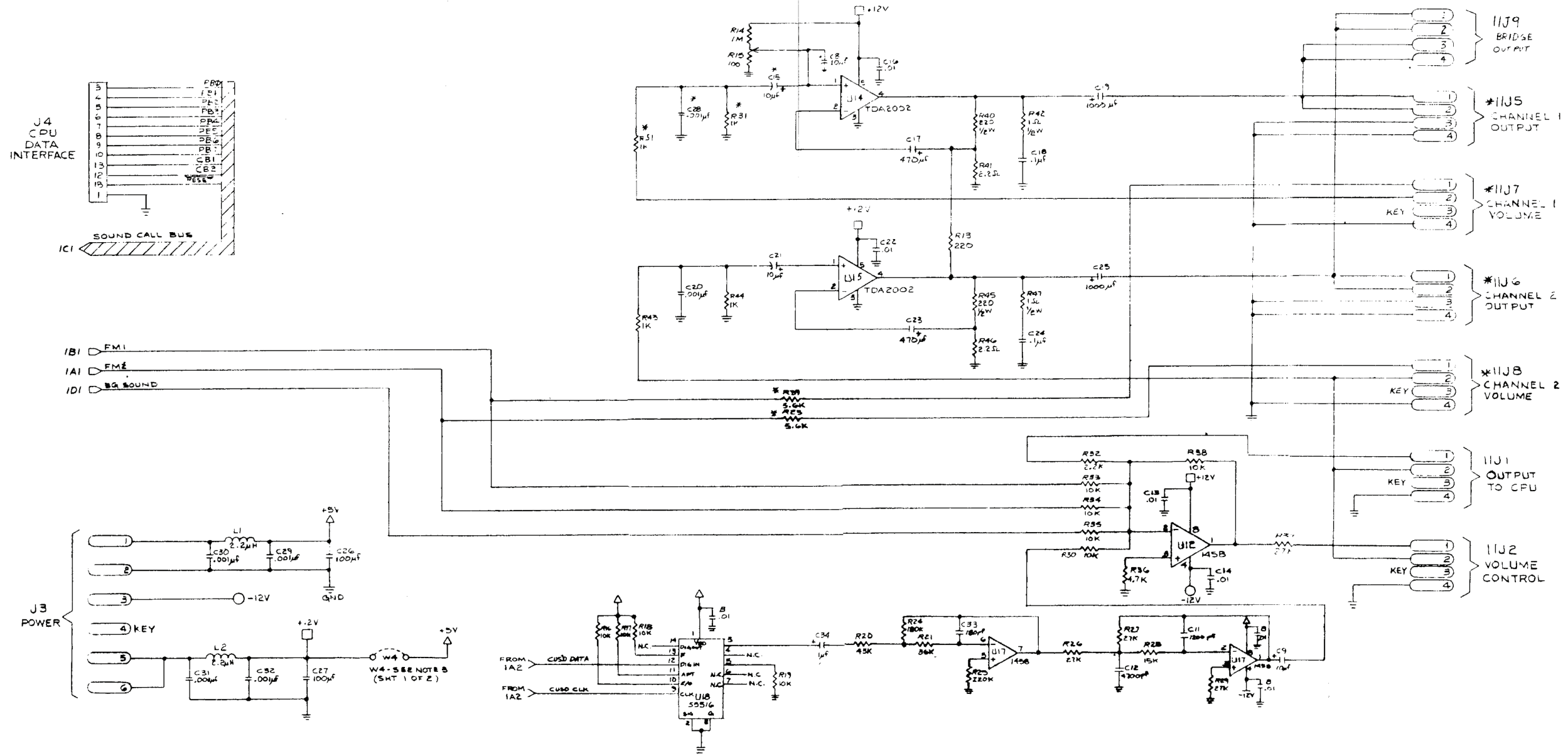
REV	DESCRIPTION OF CHANGE	ECN NO	DATE
	N. P. R.	16725	2-2-88

IC TABLE			
DESIGNATOR	TYPE	VOLT PIN	GND PIN
U3, U4, U7, U8	4001	+5V PIN 4	7
U10, U11, U4-U16	4050	+5V PIN 1	8
U9, U12, U13	UDN7180	-100P PIN 10	9
U1, U2, U5, U6	UDNG118	+90P PIN 10	9

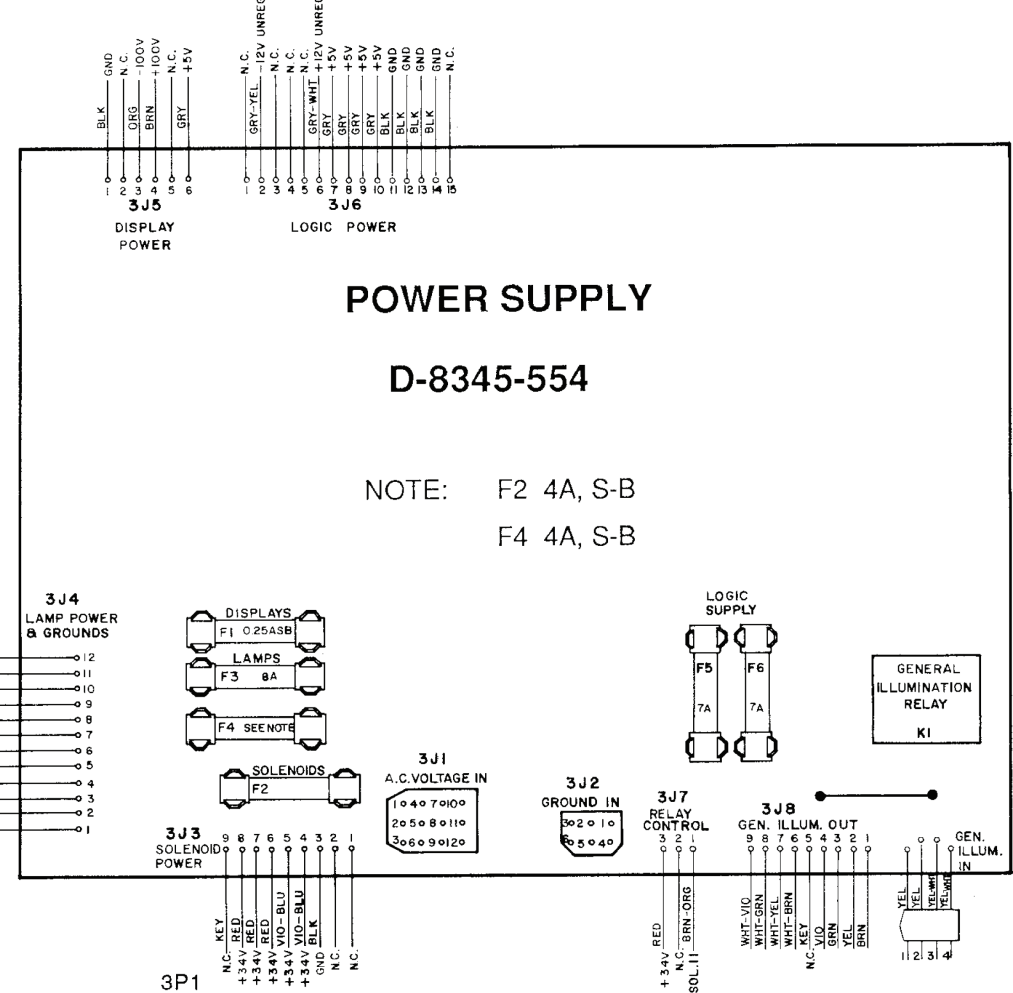
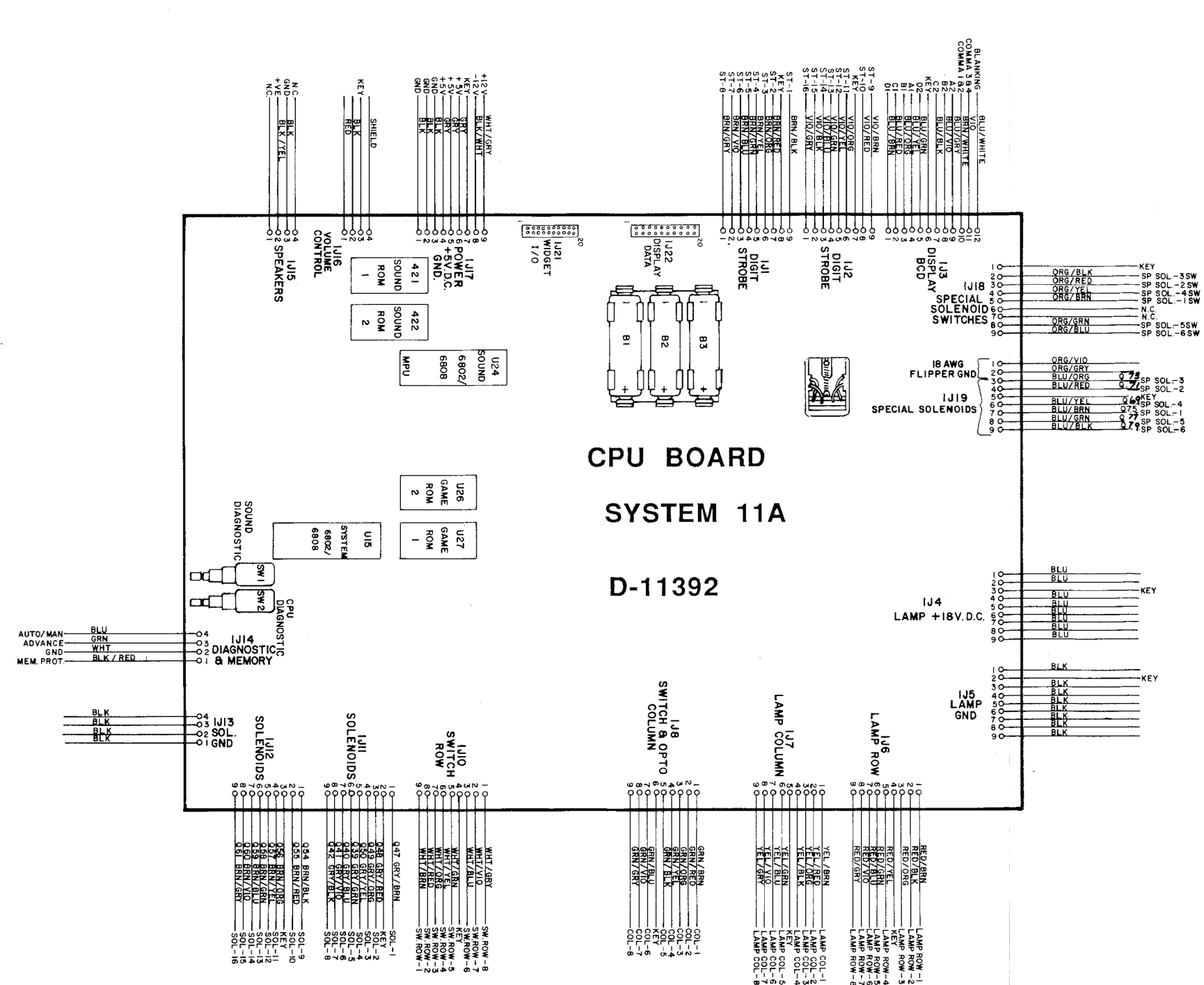
RESISTOR VALUES			
DESIGNATOR	OHMS	WATTS	%
R3-R5, R7-R9, R38, R41	8.2K	1/2 W	5
R36, R37, R39, R40, R42-R48	10K	1/2 W	5
R49	15K	1/4 W	5
R1, R2, R6, R34, R35	18K	1/4 W	5
R10-R17, R25, R26	1M	1/4 W	5

MASTER DISPLAY BOARD CONNECTOR PINTO PIN COMPATIBILITY FOR SYSTEM 12			
J3 PIN N°		J6 PIN N°	
1		4	
2		1	
3		3	
4		6	
5		5	
6		8	
7		7	
J4 PIN N°			
1		10	
2		9	
3		15	
4		16	
5		13	
6		14	
7		11	
8		12	
9			
J5 PIN N°			
1		21	
2		22	
3		23	
4		24	
5		25	
6		26	
7		20	
8		18	
9			

ITEM	PART NUMBER	DESCRIPTION	QTY	ITEM	PART NUMBER	DESCRIPTION	QTY
PROJ ENGR	K. DEGER	DO NOT SCALE WORK TO DIMENSIONS SHOWN		WILLIAMS ELECTRONICS, INC.			
DOWN BY	ROSS 1/21/87	REMOVE BURRS - BREAK SHARP EDGES		3401 N CALIFORNIA AVE CHICAGO IL 60618			
CHECKED BY	DATE	FRACTIONAL TOLERANCES UNLESS OTHERWISE SPECIFIED ±1/64 ANGULAR ±1° DECIMAL ±.005 FILLETS .020 MAX		NAME SCHEMATIC, M/DISPLAY			
APPROVAL	DATE	FIRST PROJECT NO 554		SCALE N/S SHT. 1 OF 1 PART NO 16-8995-1 REV			
		FIRST USAGE D-11414-1	1				

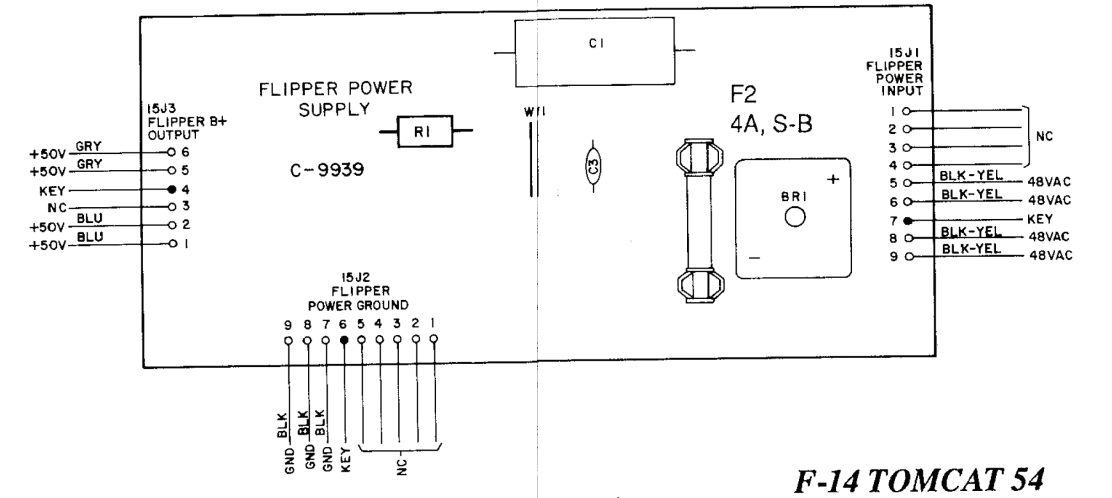
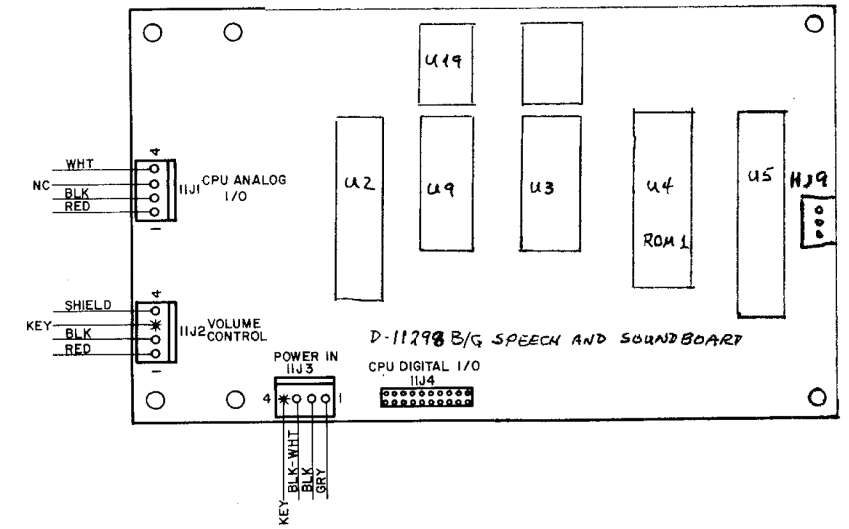


Background Sound & Speech Board (D-11298) Schematic



Pin	Wire Color	Connection
1	VIO	Lamp Rectifier, +18V DC
2	ORN	Solenoid Rectifier, +34V DC
3	ORN	Solenoid Rectifier, +34V DC
4	WHT	Transformer, 88.5V AC
5	---	---
6	---	---
7	---	---
8	---	---
9	WHT	Transformer, 88.5V AC
10	GRY-GRN	Transformer, 19-4V AC, 1Ø, C.T.
11	GRY	Transformer, 19-4V AC, 1Ø, C.T.
12	GRY-WHT	Transformer, 19-4V AC, C.T. Com.

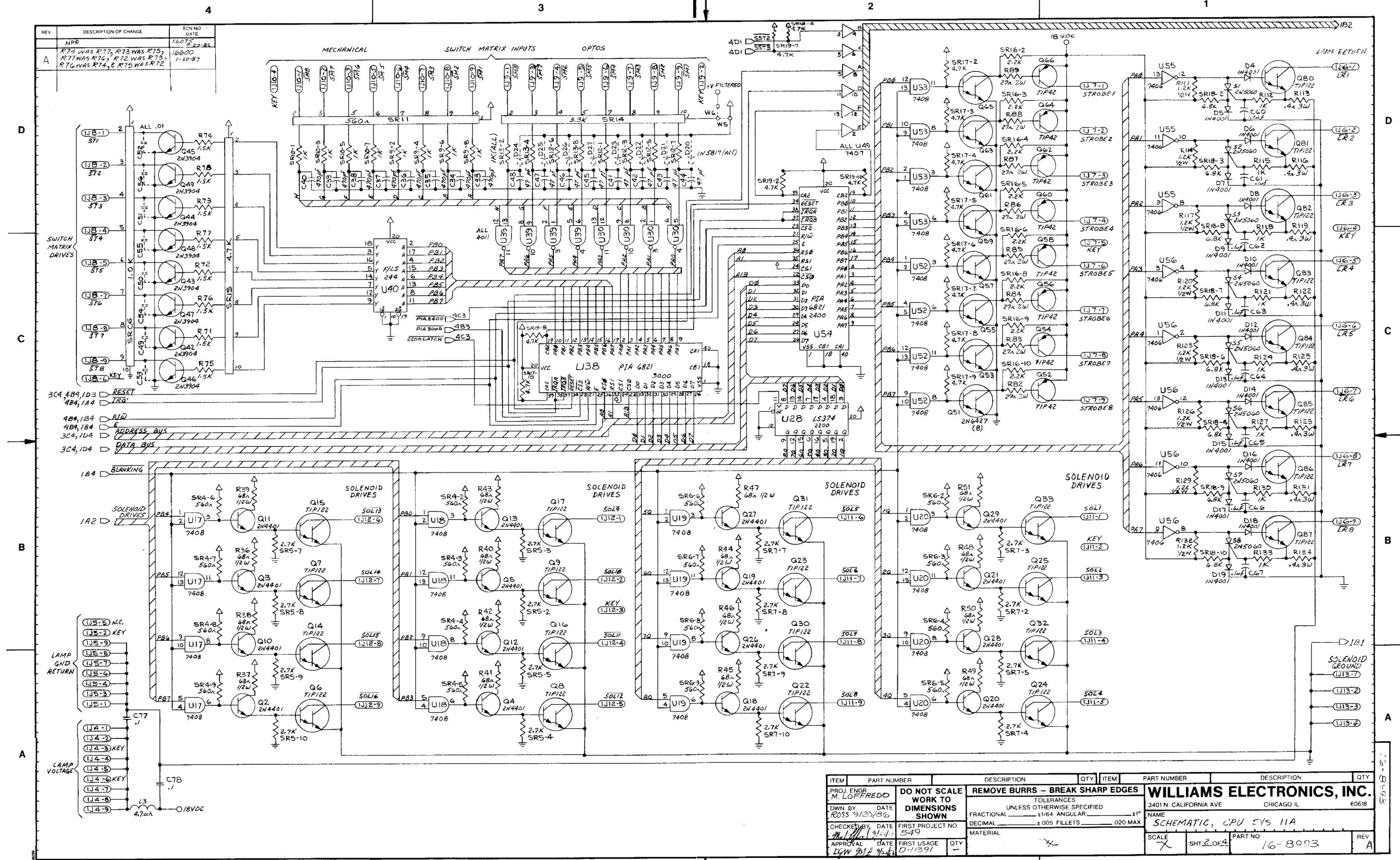
Pin	Wire Color	Connection
1	---	---
2	---	---
3	BLK	Lamp Rectifier (Gnd)
4	---	---
5	---	---
6	BLK	Lamp Rectifier (Gnd)



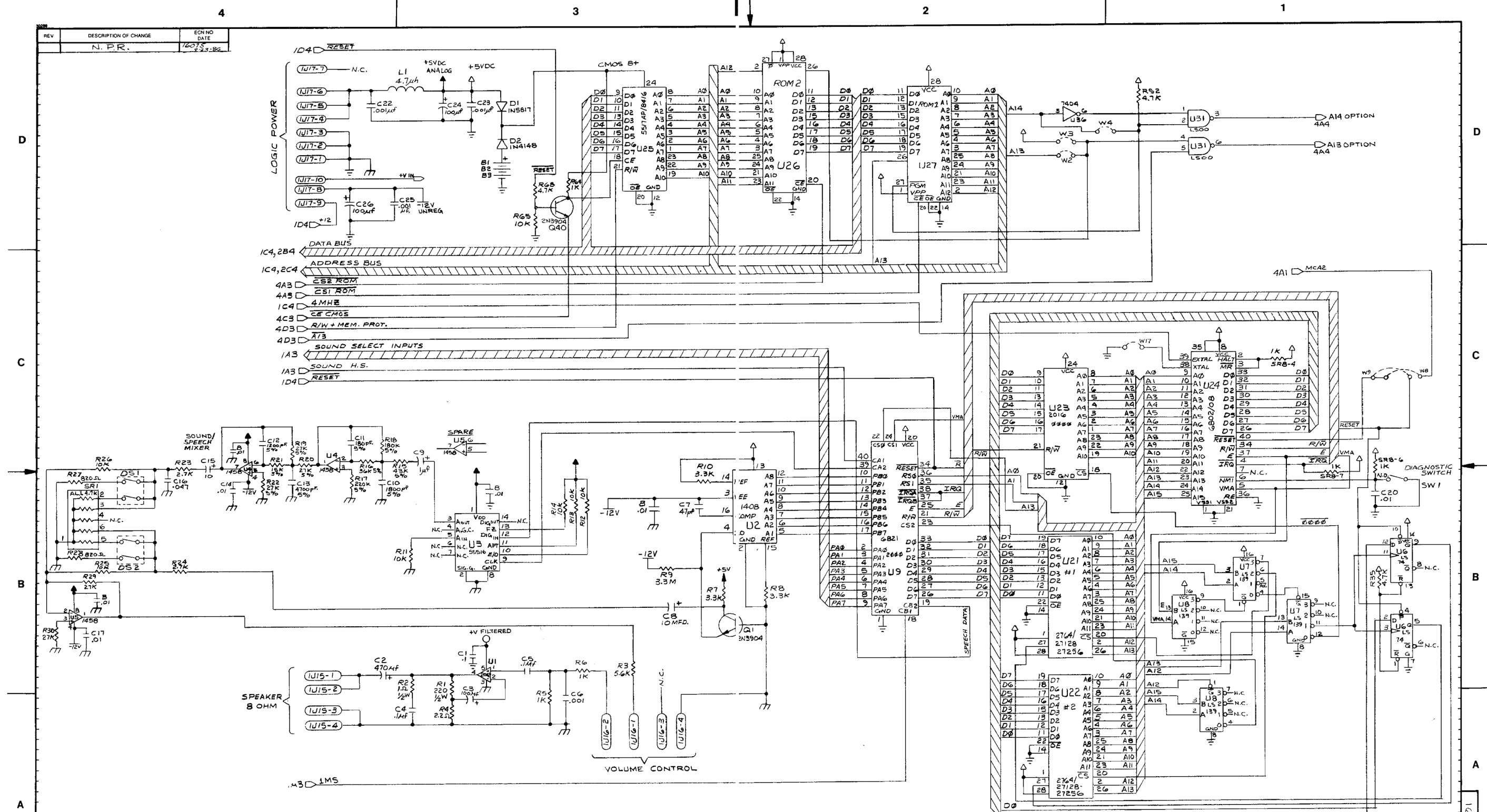
54a

F-14 TOMCAT 54

Interboards Signals Diagrams



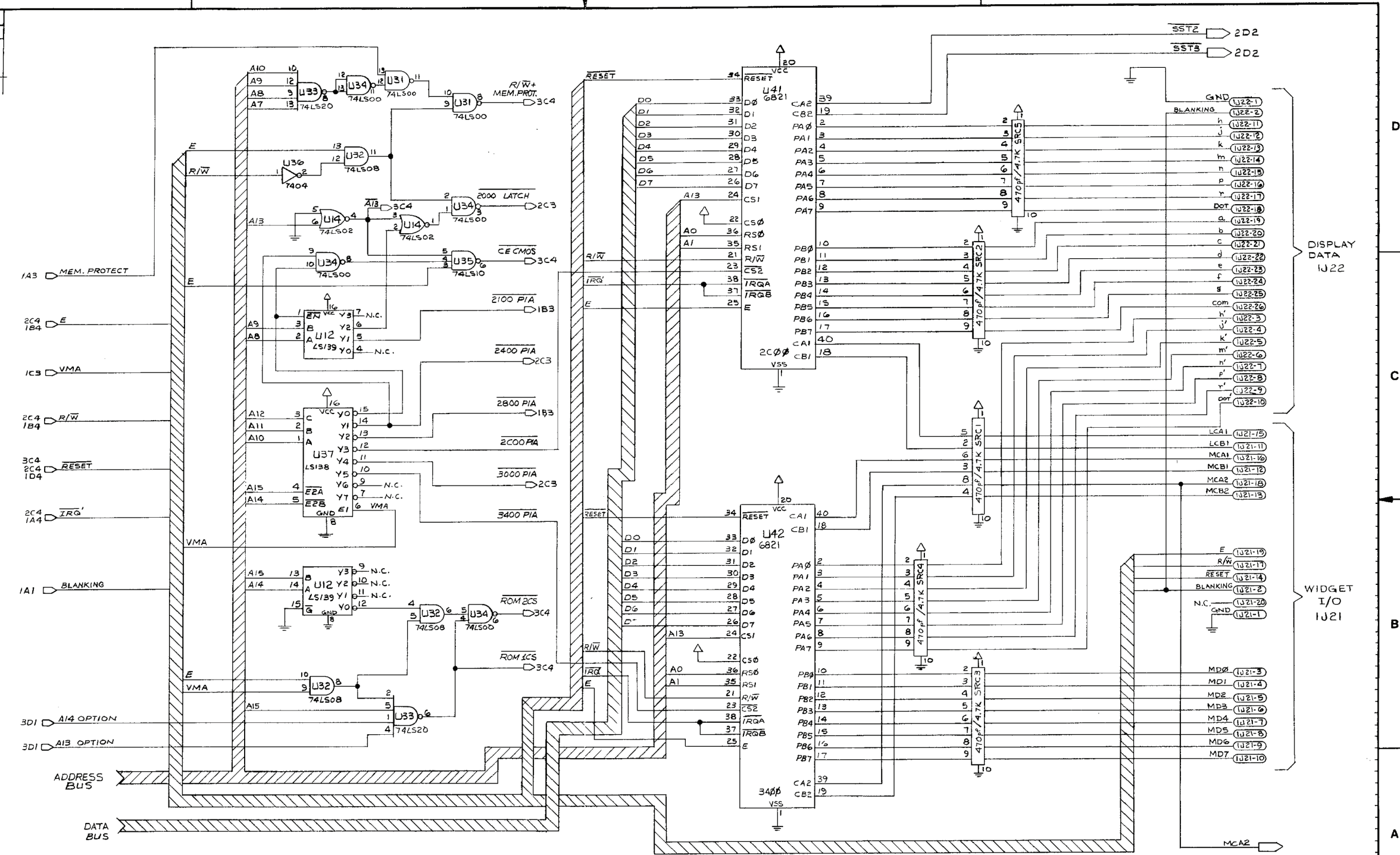
Schematic, System 11A CPU Board (16-8993, Sheet 2 of 4)



ITEM	PART NUMBER	DESCRIPTION	QTY	ITEM	PART NUMBER	DESCRIPTION	QTY
PROJ ENGR	M. LOFFREDO	DO NOT SCALE WORK TO DIMENSIONS SHOWN		WILLIAMS ELECTRONICS, INC. 3401 N. CALIFORNIA AVE. CHICAGO IL. 60618 NAME: SCHEMATIC, CPU SYS. 11A			
OWN BY	ROSS 9/20/86	FIRST PROJECT NO.	549				
CHECKED BY	DATE	FIRST USAGE	QTY	SCALE: 1:1 SHT 3 OF 4 PART NO: 16-8993 REV:			
APPROVAL	DATE	FIRST USAGE	QTY				

Schematic, System 11A CPU Board (16-8993, Sheet 3 of 4)

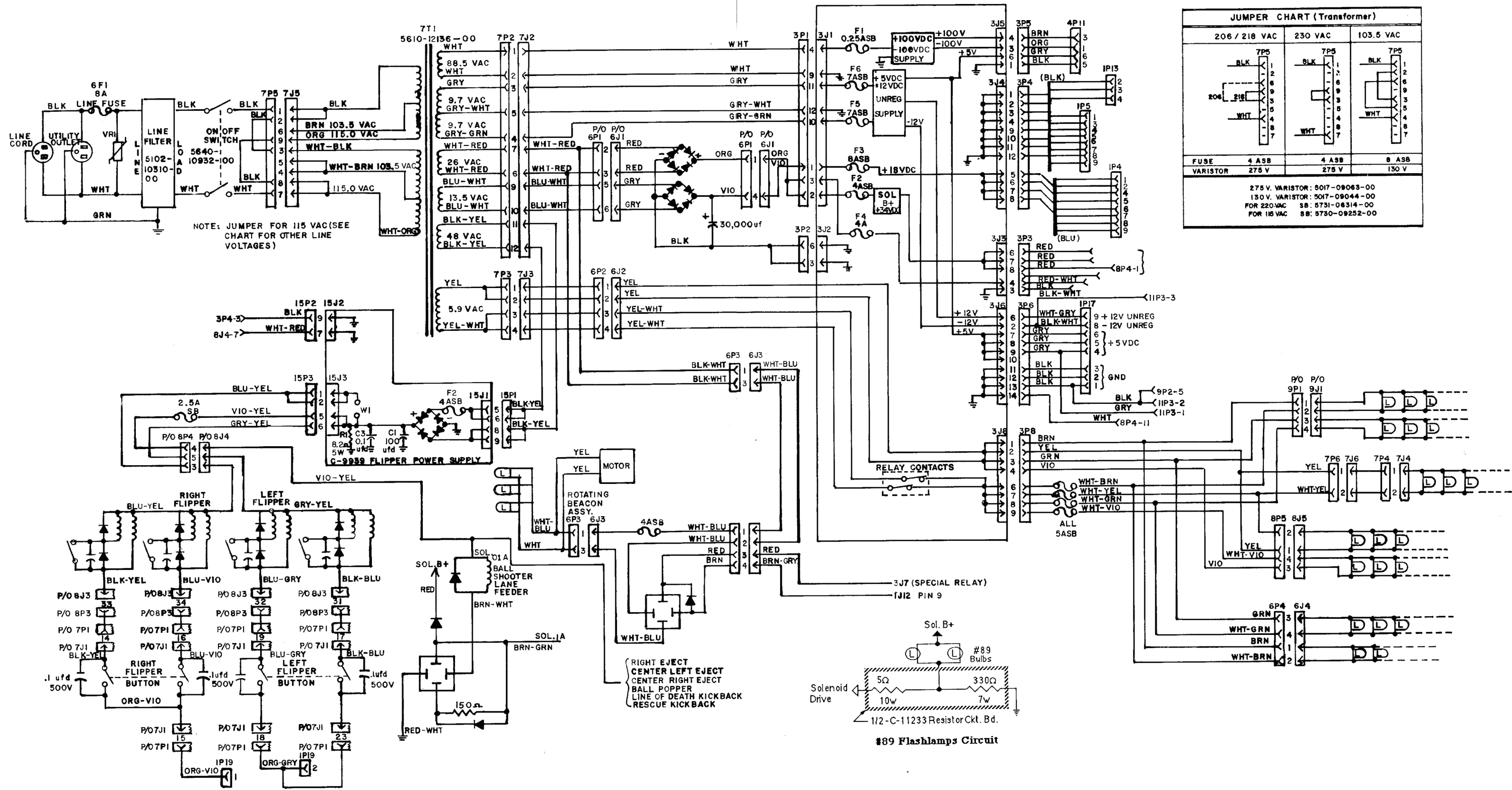
REV	DESCRIPTION OF CHANGE	ECN NO	DATE
	N. P. R.	16075	7-25-86
A	SRC2 WAS SRC2; SRC2 WAS SRC3. SRC1; PIN 8 WAS PIN 7, PIN 6 WAS PIN 7, PINS WAS PIN 6	16600	1-28-87



ITEM	PART NUMBER	DESCRIPTION	QTY	ITEM	PART NUMBER	DESCRIPTION	QTY
PROJ. ENGR M. LOFFREDO		DO NOT SCALE WORK TO DIMENSIONS SHOWN		REMOVE BURRS - BREAK SHARP EDGES		TOLERANCES UNLESS OTHERWISE SPECIFIED	
DOWN BY DATE ROSS 9/20/86		FIRST PROJECT NO. 549		FRACTIONAL ±1/64 ANGULAR ±1°		DECIMAL ±.005 FILLETS .020 MAX	
CHECKED BY DATE Djm 9/22/86		FIRST USAGE D-11291		MATERIAL 11		WILLIAMS ELECTRONICS, INC. 3401 N. CALIFORNIA AVE. CHICAGO IL. 60618	
APPROVAL DATE		FIRST USAGE		NAME SCHEMATIC, CPU SYS 11A		SCALE N/S	
				PART NO. 16-8993		REV A	

Schematic, System 11A CPU Board (16-8993, Sheet 4 of 4)

F-14 TOMCAT 58



JUMPER CHART (Transformer)

	206 / 218 VAC	230 VAC	103.5 VAC
FUSE	4 ASB	4 ASB	8 ASB
VARIATOR	275 V	275 V	130 V
275 V. VARIATOR: 8017-09063-00 130 V. VARIATOR: 5017-09044-00 FOR 220VAC SB: 5731-06314-00 FOR 115 VAC SB: 5750-09252-00			

Power Wiring Diagram

